



Quick start : reading files

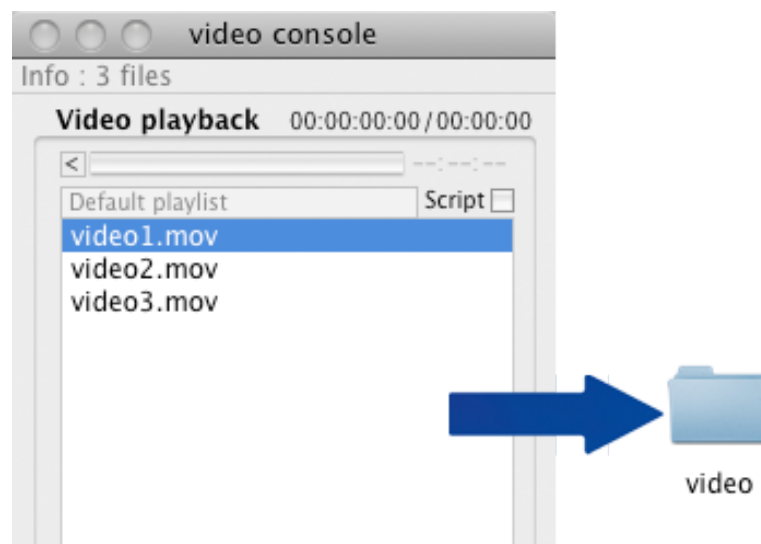
TABLE OF CONTENTS

- 1 - Introduction
 - 2 - Add files in VIDEO folder
 - 3 - Add files in main playlist (drag&drop)
 - 4 - Choose an other directory for playlists
-

1/ Introduction

Main list corresponds to a folder, by default is located in :

Applications -> Azasoft VideoStage -> video



All compatibles media files located in this folder they will be added to the main list.

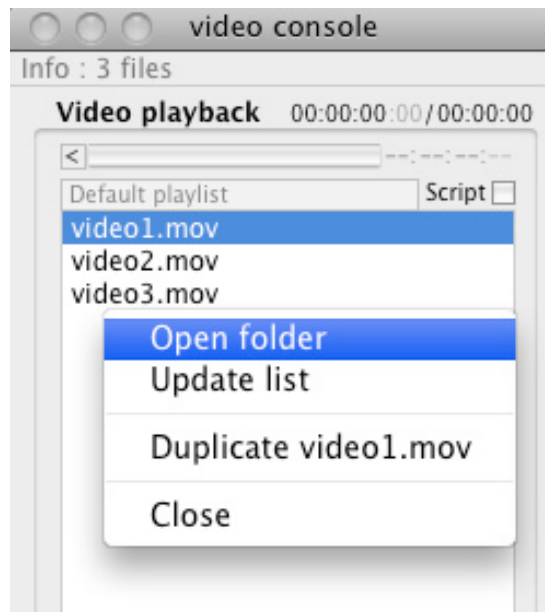
Note : all sub-folders will not be reconized.

2/ Add files in VIDEO folder

By default all compatibles media files (videos, images, sounds) are grouped in the folder :

Applications -> Azasoft VideoStage -> video

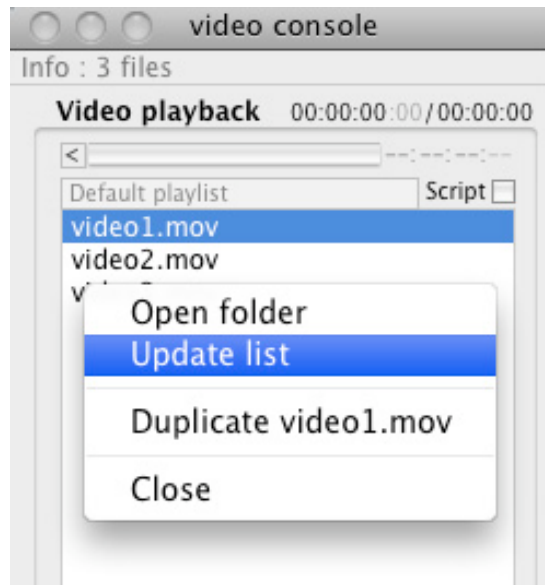
Can directly access this folder by placing the cursor in main list, then by right clic (or CTRL+clic) choose from the menu **Open folder** :



Drop any compatible media files in the **video** folder :

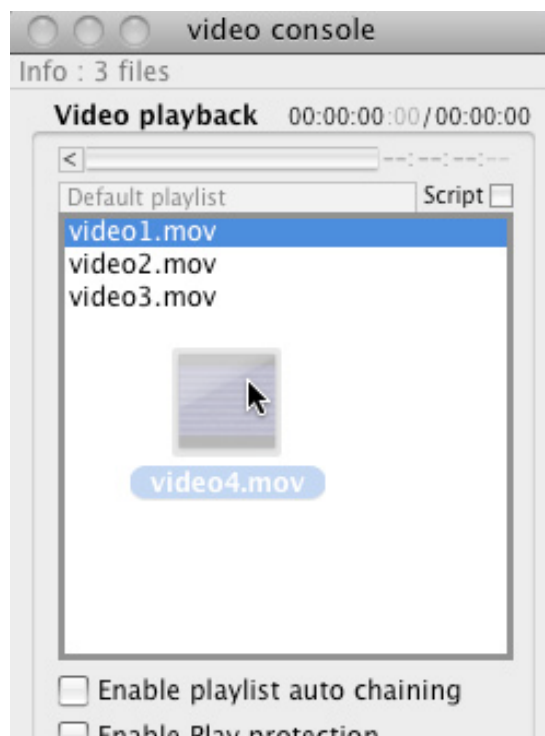


Then click from the menu **Update list** :



3/ Add files in main playlist

It's possible to directly add files in VIDEO folder from main list by drag&drop :



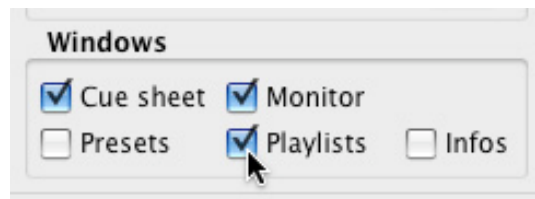
IMPORTANT NOTE : file will be moved in the default folder :
Applications -> Azasoft VideoStage -> video

4/ Choose an other directory for playlists

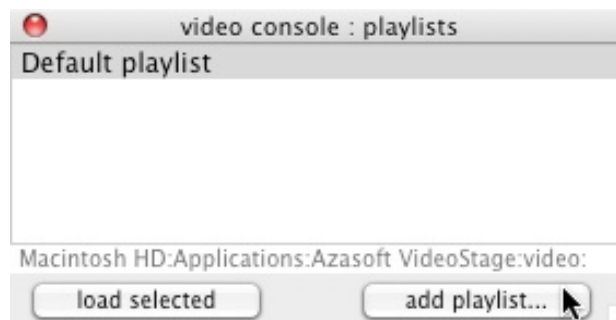
To change the destination folder by default :

Applications -> Azasoft VideoStage -> video

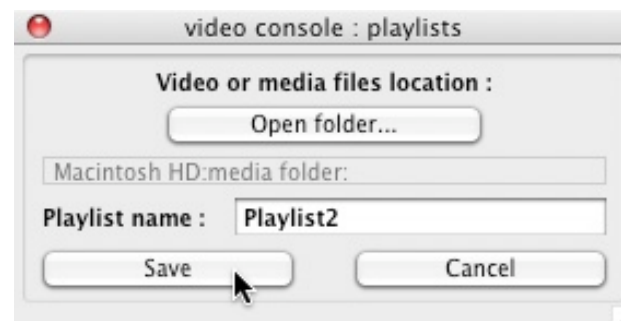
Check window **Playlists** :



Click the buttons : **add playlist -> Open folder**



Select a folder with compatible media files, then give a name to this new playlist. Finally click the Save button.



All the selected folder will be read and imported into the main list.

Note : The folder may be located on an external media like USB drive.
It must be connected to each use of the new playlist.